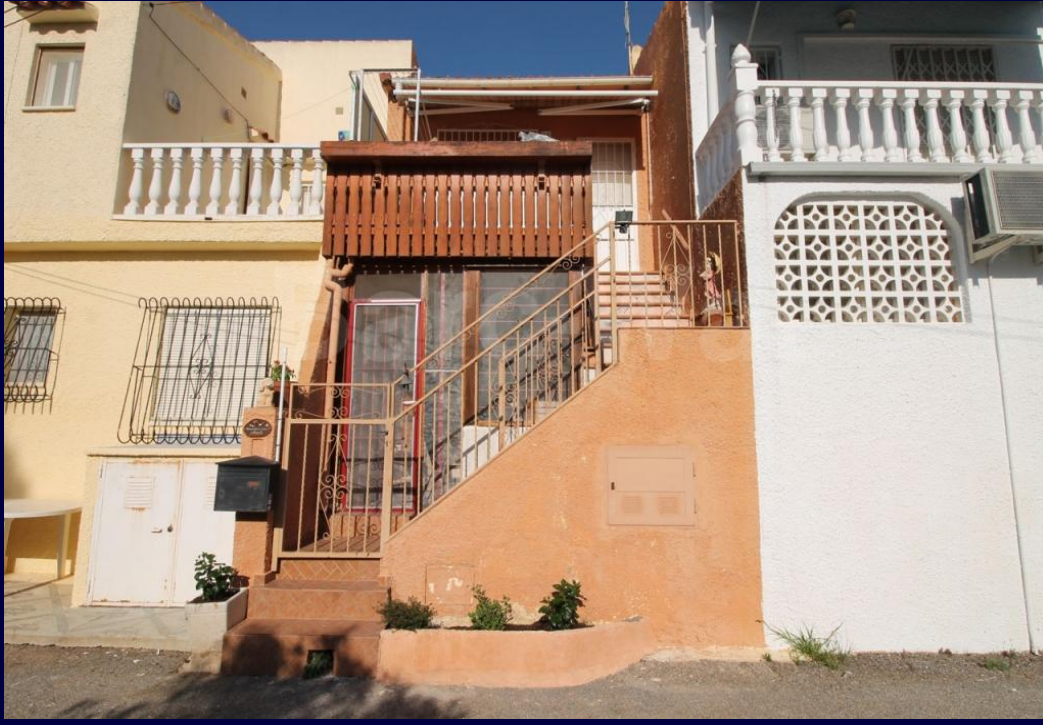


BARCLAYS PROPERTIES



MODEL	EVITA
M ² HOUSE	50M²
PLOT	84M²

REFERENCE	4058
PRICE	57.000€



TERRACE	(18 m ²)
LIVING ROOM	(3.91m x 3.66m)
KITCHEN	(1.75m x 1.57m)
BEDROOM	(2.42m x 2.95m)
BATHROOM	(2.02m x 1.13m)
TERRACE	(2.5m x 2.29m)
LIVING ROOM	(3.02m x 3.76m)
ROOM	(2.27m x 1.21m)
UTILITY ROOM	(1.65m x 1.98m)
BEDROOM	(2.67m x 3.21m)
BATHROOM	(1.66m x 1.72m)

What you should know:

- Energy rating: In Process
- Distance to beach: 5km



TERRAZA	(18 m ²)
SALÓN	(3.91m x 3.66m)
COCINA	(1.75m x 1.57m)
DORMITORIO	(2.42m x 2.95m)
BAÑO	(2.02m x 1.13m)
TERRAZA	(2.5m x 2.29m)
SALÓN	(3.02m x 3.76m)
CUARTO	(2.27m x 1.21m)
GALERIA	(1.65m x 1.98m)
DORMITORIO	(2.67m x 3.21m)
BAÑO	(1.66m x 1.72m)

Lo que deberias saber:

- Certificado energético: En curso
- Distancia a la playa: 5km

- **Distance to airport: 25km**
- **Distance to golf: 14km**
- **Orientation: West**
- **Air conditioning**
- **Fully Furnished**
- **Fitted Wardrobes**
- **Gas central heating**
- **Self-contained accommodation**
- **Walk in shower in bathroom**
- **En-suite bathroom**
- **Storage facilities**
- **Security grills**
- **Renovated**
- **Terrace**
- **New windows**
- **Ceiling fans**
- **Quiet yet central location**

- **Distancia al aeropuerto: 25km**
- **Distancia al campo de golf: 14km**
- **Orientación: Oeste**
- **Aire acondicionado**
- **Amueblado**
- **Armarios empotrados**
- **Calefaccion central de gas**
- **Dos alojamientos separados**
- **Ducha a nivel en el baño**
- **En-suite baño**
- **Facilidades de almacenaje**
- **Rejas de seguridad**
- **Renovado**
- **Terraza**
- **Ventanas nuevas**
- **Ventiladores del techo**
- **Zona céntrica y tranquila**

96 679 78 85 | info@barclaysproperties.com | barclaysproperties.com