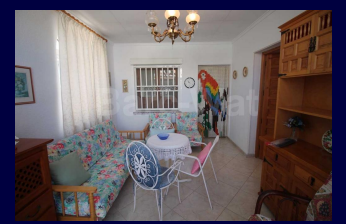


BARCLAYS PROPERTIES



MODEL	ROSA
M ² HOUSE	133M²
PLOT	220M²

REFERENCE	4275
PRICE	107.000€



GLAZED PORCH	(3.09m x 4.07m)
LIVING ROOM	(13.72 m ²)
KITCHEN	(3.22m x 2.1m)
BEDROOM	(2.96m x 2.68m)
BEDROOM	(2.69m x 3.64m)
BEDROOM	(2.9m x 2.16m)
BATHROOM	(1.25m x 2.59m)
LIVING ROOM	(3.81m x 3.57m)
SOLARIUM	(4.88m x 2.61m)
UNDER-BUILD	(53 m ²)

What you should know:

- Energy rating: In Process
- Distance to beach: 5km
- Distance to amenities: 500m



PORCHE ACRISTALADO	(3.09m x 4.07m)
SALÓN	(13.72 m ²)
COCINA	(3.22m x 2.1m)
DORMITORIO	(2.96m x 2.68m)
DORMITORIO	(2.69m x 3.64m)
DORMITORIO	(2.9m x 2.16m)
BAÑO	(1.25m x 2.59m)
SALÓN	(3.81m x 3.57m)
SOLÁRIUM	(4.88m x 2.61m)
SÓTANO	(53 m ²)

Lo que deberias saber:

- Certificado energético: En curso
- Distancia a la playa: 5km
- Distancia a los servicios: 500m

- **Distance to golf: 14km**
- **Fully Furnished**
- **Refurbished bathroom**
- **Good condition**
- **Walk in shower in bathroom**
- **Room for a pool**
- **Fully paved garden**
- **Blinds**
- **Glazed porch**
- **Sliding entrance gate**
- **Security grills**
- **Under-build**
- **Terrace**
- **Sun Awning**
- **Sea Views**
- **Quiet yet central location**

- **Distancia al campo de golf: 14km**
- **Amueblado**
- **Baño renovado**
- **Buen estado**
- **Ducha a nivel en el baño**
- **Espacio para una piscina**
- **Jardín totalmente pavimentado**
- **Persianas**
- **Porche acristalado**
- **Puertas de entrada corredera**
- **Rejas de seguridad**
- **Sótano**
- **Terraza**
- **Toldo**
- **Vistas al mar**
- **Zona céntrica y tranquila**

96 679 78 85 | info@barclaysproperties.com | barclaysproperties.com