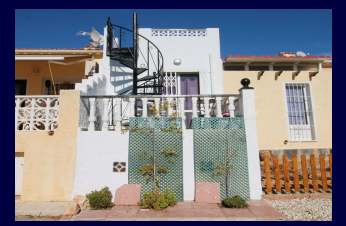


BARCLAYS PROPERTIES



MODEL	ROSITA
M ² HOUSE	51M²
PLOT	69M²

REFERENCE	4198
PRICE	59.000€



EXCLUSIVE TO BARCLAYS PROPERTIES

TERRACE	(6.88m x 2.93m)
PORCH	(3.75m x 1.6m)
DINING ROOM	(3.9m x 2.6m)
KITCHEN	(2m x 1.8m)
LOUNGE	(3.3m x 3.7m)
BEDROOM	(2.3m x 2.9m)
BEDROOM	(2.9m x 2.76m)
BATHROOM	(2m x 1.6m)
BACK TERRACE	(2.89m x 1.88m)
SOLARIUM	(2.89m x 1.88m)

What you should know:

- Energy rating: In Process
- Distance to beach: 5km
- Distance to amenities: 750m



EN EXCLUSIVIDAD CON BARCLAYS PROPERTIES

TERRAZA	(6.88m x 2.93m)
PORCHE	(3.75m x 1.6m)
COMEDOR	(3.9m x 2.6m)
COCINA	(2m x 1.8m)
SALA DE ESTAR	(3.3m x 3.7m)
DORMITORIO	(2.3m x 2.9m)
DORMITORIO	(2.9m x 2.76m)
BAÑO	(2m x 1.6m)
TERRAZA TRASERA	(2.89m x 1.88m)
SOLÁRIUM	(2.89m x 1.88m)

Lo que deberias saber:

- Certificado energético: En curso
- Distancia a la playa: 5km
- Distancia a los servicios: 750m

- **Distance to airport: 25km**
- **Distance to golf: 14km**
- **Fully Furnished**
- **Street parking**
- **Open Plan Kitchen**
- **Feature electric fire**
- **Security grills**
- **Renovated**
- **Solarium**
- **Raised terrace**
- **Back terrace**
- **Double glazed aluminium windows**
- **Ceiling fans**
- **Sea Views**
- **Quiet yet central location**
- **Exterior seating area**

- **Distancia al aeropuerto: 25km**
- **Distancia al campo de golf: 14km**
- **Amueblado**
- **Aparcamiento en la calle**
- **Cocina americana**
- **Estufa electrica**
- **Rejas de seguridad**
- **Renovado**
- **Solárium**
- **Terraza en alto**
- **Terraza trasera**
- **Ventanas climalit de aluminio**
- **Ventiladores del techo**
- **Vistas al mar**
- **Zona céntrica y tranquila**
- **Zona exterior de descanso**

96 679 78 85 | info@barclaysproperties.com | barclaysproperties.com